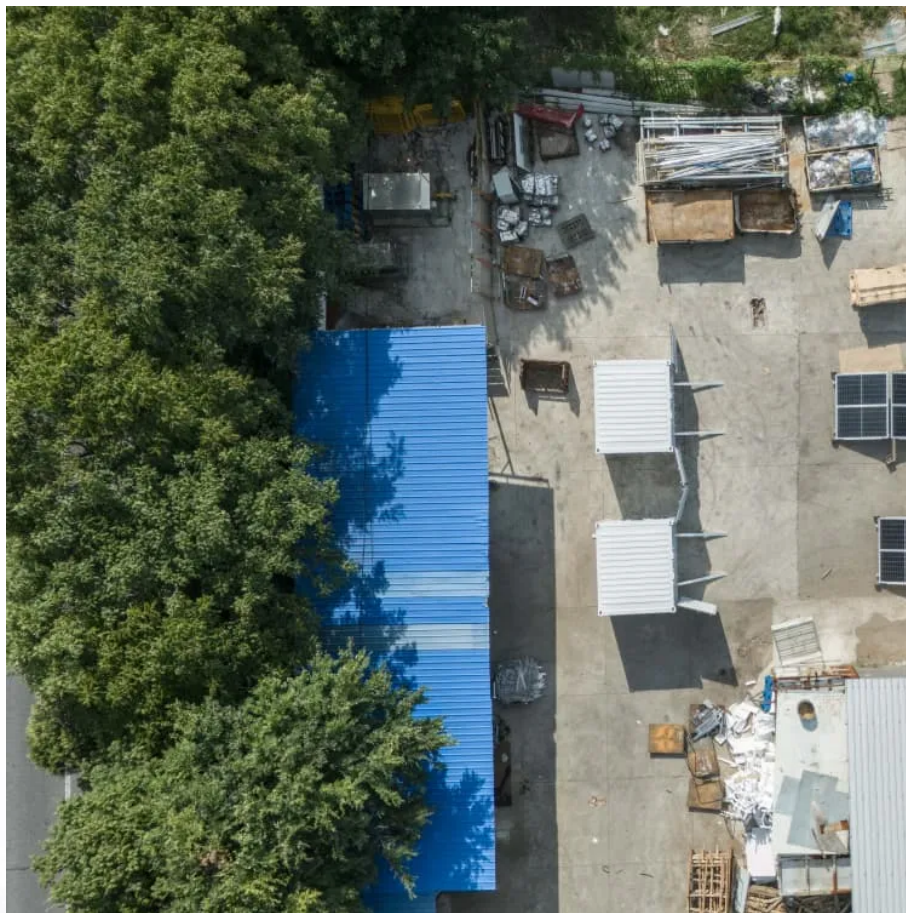


Are 24v and 20a inverters compatible





Overview

How many batteries can I connect to a 24V inverter?

The number of batteries you can connect to a 24V inverter depends on the amp-hour (Ah) capacity of the batteries and the inverter's power rating. Typically, for a 24V system, batteries are connected in series to achieve the desired voltage.

Are 24V inverters a good choice?

The higher efficiency of 24V inverters typically results in lower energy losses and reduced operating costs over time. Additionally, 24V systems generally require thinner, less expensive wiring due to lower current needs. However, 24V batteries and some components may be pricier initially.

How do I choose a solar inverter?

For optimal performance in home energy stems, choose an inverter specifically designed for lithium battery or LiFePO4 battery systems, and always verify compatibility before purchasing. Remember: Proper inverter pairing ensures safety, maximizes battery life, and improves overall system efficiency in your solar energy setup.

How do I connect a 24V lithium battery to my inverter?

Our 24v lithium batteries are even simpler to connect to the 24v inverter since it is only a single battery. Simply connect the positive inverter battery cable to the positive battery terminal and the negative inverter battery cable to the negative battery terminal.



Are 24v and 20a inverters compatible

12V/24V Inverter models that are compatible ...

We often receive queries about specific inverters, so we have decided to publish a list of popular 12v and 24v inverters sold in South Africa that are ...

12V/24V Inverter models that are compatible with Red Pole ...

We often receive queries about specific inverters, so we have decided to publish a list of popular 12v and 24v inverters sold in South Africa that are compatible with and that have been tested ...

Frequently Asked Questions about Inverters

How Much Battery Capacity Do I Need with An Inverter?How Much Power Does An Inverter consume?Is There A Stand-By Switch on The Inverter?Can I Power A Computer with An Inverter?Can A Microwave Be Powered with An Inverter?Are There Any Appliances That Cannot Be Powered by An Inverter?How Much Current Will An Inverter Draw from My Batteries?How Thick Should My Battery Cables be?Does An Inverter Need A Lot of Ventilation?Can An Inverter Be Used in Parallel with The Generator Or The Grid?Yes, you can. All Mastervolt sine wave inverters can easily and safely supply a computer without the slightest problem or risk. In fact, the output voltage from an inverter is often better than that from the electricity grid or shore power. This is why Mastervolt inverters, combined with a battery charger and a battery set, are often used as a back See more on mastervolt Renogy12V vs 24V Inverter: What's The DifferenceTorn between 12V and 24V inverters? Discover the key differences in efficiency, cost, and power capacity to determine which is better for your ...

How to Choose the Best 24V Solar Inverter for Your Off-Grid ...

4 days ago · When selecting a 24v solar inverter for off-grid energy systems, prioritize models with pure sine wave output, at least 90% efficiency, and surge capacity of 2-3x the continuous ...

How do I know if my current inverter is ...

Dec 2, 2024 · 6. Perform Compatibility Checks for Specific Battery Systems If using high-voltage battery systems (e.g., 150V to 400V), ensure the ...

How do I know if my current inverter is compatible with new ...

Dec 2, 2024 · 6. Perform Compatibility Checks for Specific Battery Systems If using high-voltage battery systems (e.g., 150V to 400V), ensure the inverter supports these voltages. By following ...

Can Lithium Batteries Work With Any Type of Inverter?

Jul 21, 2025 · The Bottom Line While lithium batteries can't work with every inverter, most modern solar and off-grid inverters now offer lithium compatibility. For optimal performance in home ...

Can I use a 24V 20AH deep cycle battery with a 24V inverter?



Nov 22, 2025 · For a 24V 20AH battery, the theoretical maximum power it can supply is $24V \times 20A = 480$ watts. But in real - world scenarios, you should never run the battery at its ...

How do I match a lithium solar battery with an inverter?

Sep 1, 2025 · Some inverters are designed specifically for lithium batteries, while others can work with multiple battery types. When choosing an inverter, make sure it is compatible with lithium ...

How do I match a lithium solar battery with ...

Sep 1, 2025 · Some inverters are designed specifically for lithium batteries, while others can work with multiple battery types. When choosing an ...

Frequently Asked Questions about Inverters

Frequently Asked Questions about Inverters How much battery capacity do I need with an inverter? As a rule of thumb, the minimum required battery capacity for a 12-volt system is ...

How to Choose the Right Inverter for Lithium Batteries?

Apr 11, 2025 · What Are the Key Requirements of Lithium Batteries for Inverters? Lithium batteries require inverters with precise voltage compatibility (e.g., 12V, 24V, or 48V systems) ...

12V vs 24V Inverter: What's The Difference & Which is Better

Torn between 12V and 24V inverters? Discover the key differences in efficiency, cost, and power capacity to determine which is better for your energy needs.

Can Lithium Batteries Work With Any Type of ...

Jul 21, 2025 · The Bottom Line While lithium batteries can't work with every inverter, most modern solar and off-grid inverters now offer lithium ...

Are 24v and 20a inverters compatible

Wherever you are, we're here to provide you with reliable content and services related to Are 24v and 20a inverters compatible, including cutting-edge solar energy storage systems, advanced ...

Contact Us

For technical specifications, project proposals, or partnership inquiries, please visit:

<https://lopianowa.pl>



Scan QR Code for More Information



<https://lopianowa.pl>