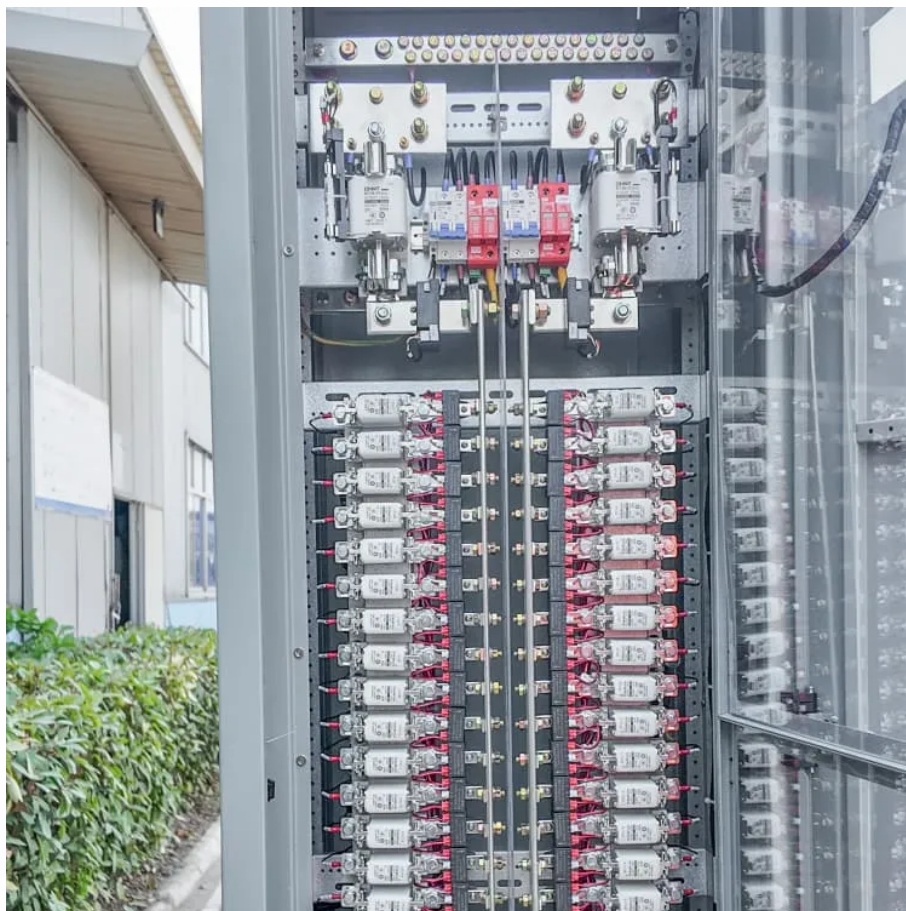


# Grid-connected inverter cabinet





## Overview

---

What is a photovoltaic grid-connected cabinet?

Photovoltaic grid-connected cabinet is a distribution equipment connecting photovoltaic power station and power grid, and is the total outgoing of photovoltaic power station in the photovoltaic power generation system, and its main role is to act as the dividing point between the photovoltaic power generation system and the power grid.

What is a grid-connected PV inverter?

In a grid-connected system, the inverter enables seamless connection to the power grid. The PV inverter can be a string inverter or microinverter, and both types synchronize the photovoltaic power to the utility grid power frequency. Grid-connected PV inverters are capable of preventing islanding during no utility power conditions.

How do grid connected inverters control power?

Review of control of a typical grid-connected inverter Grid-connected inverters control the magnitude and angle of their output current to regulate for example their DC-link voltage (active rectifier) or to regulate real and/or reactive power flows (PQ source). Several approaches towards achieving control of real and reactive power exist.

What is a grid-connected inverter equivalent model?

Grid-connected inverter equivalent model during normal operation in sequence components. During current limiting, the inverter's fault model is essentially a positive sequence current source with a current of  $i \rightarrow L, \text{sat}$  in parallel with the filter capacitor as shown in Fig. 7 (reproduced from ) where if  $= iL, \text{sat}$ . Fig. 7.



## Grid-connected inverter cabinet

---

The difference between grid connected cabinets and AC

Grid connected cabinet, also known as inverter cabinet, is a key equipment for converting direct current generated by solar panels into alternating current. It mainly includes inverters, ...

---

### Photovoltaic Grid-connected Cabinet

The Photovoltaic Grid Connected Cabinet is a high-performance solution designed for seamless integration of solar photovoltaic (PV) systems with the electrical grid. Engineered with ...

---

### Photovoltaic Grid-Connected Cabinet

May 31, 2025 · This product is mainly used in 100KW~2000KW high-power industrial and commercial photovoltaic grid-connected power generation systems, and is connected in series ...

---

### CYBWG PV Grid Connected Cabinet,Chiya Electric ...

Jul 24, 2024 · CYBWG photovoltaic grid-connected cabinet is an important part of undertaking centralized inverter and step-up transformer or AC combiner box and step-up transformer, the ...

---

### Photovoltaic Grid-Connected Cabinet

May 31, 2025 · This product is mainly used in 100KW~2000KW high-power industrial and commercial photovoltaic grid-connected power generation ...

---

### PWD Grid-Connected and Off-Grid Switching Cabinet System

The PWD grid-connected and off-grid switching cabinet system forms an AC microgrid system composed of an AC distribution cabinet, a photovoltaic inverter (optional), local loads, and an ...

---

### HLBWG Photovoltaic Grid-Connected Cabinet

Photovoltaic grid-connected cabinet is a distribution equipment connecting photovoltaic power station and power grid, and is the total outgoing of photovoltaic power station in the ...

---

### Photovoltaic Grid-connected Cabinet

The Photovoltaic Grid Connected Cabinet is a high-performance solution designed for seamless integration of solar photovoltaic (PV) systems with ...

---

### Photovoltaic Grid Connected Cabinets:

Jul 4, 2025 · Photovoltaic Grid Connected Cabinets: The Key to Seamless Solar Integration and Sustainable Energy Solutions 1 . Introduction: In a 5MW solar farm project in Southeast Asia, ...

---

### Photovoltaic Grid-Connected Cabinet

Importance: The PV grid-connected cabinet serves as the "safety gateway" between the photovoltaic system and the grid. Its performance directly affects the safety, stability, and ...

---



#### Photovoltaic grid-connected cabinet

The photovoltaic grid-connected cabinet is mainly composed of disconnecting switches, circuit breakers and relevant control elements. Since it connects the generator system and the power ...

---

#### The difference between grid connected ...

Grid connected cabinet, also known as inverter cabinet, is a key equipment for converting direct current generated by solar panels into alternating ...

---

#### Photovoltaic grid box\_SG Elektrizitaet GmbH (Shanghai) Co., ...

SGD series PV grid-connected cabinet (hereinafter referred to as grid-connected cabinet) is suitable for AC 50/60HZ, rated working voltage AC400V, rated working current up to 800A, ...

---

## Contact Us

---

For technical specifications, project proposals, or partnership inquiries, please visit:

<https://lopianowa.pl>

## Scan QR Code for More Information



<https://lopianowa.pl>