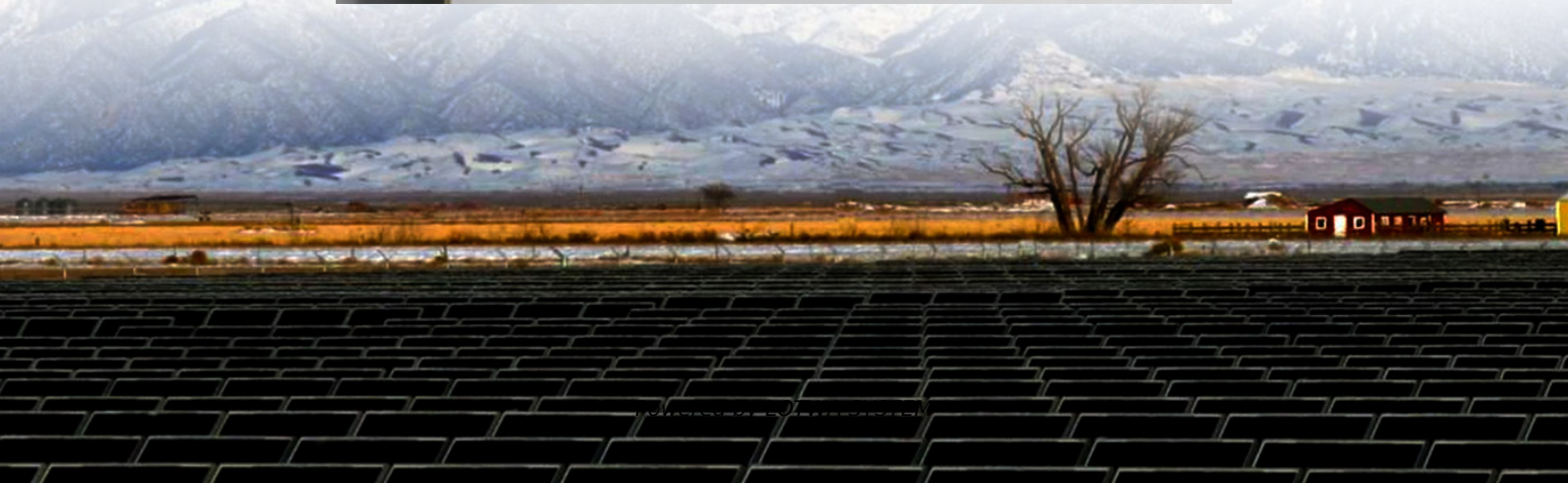
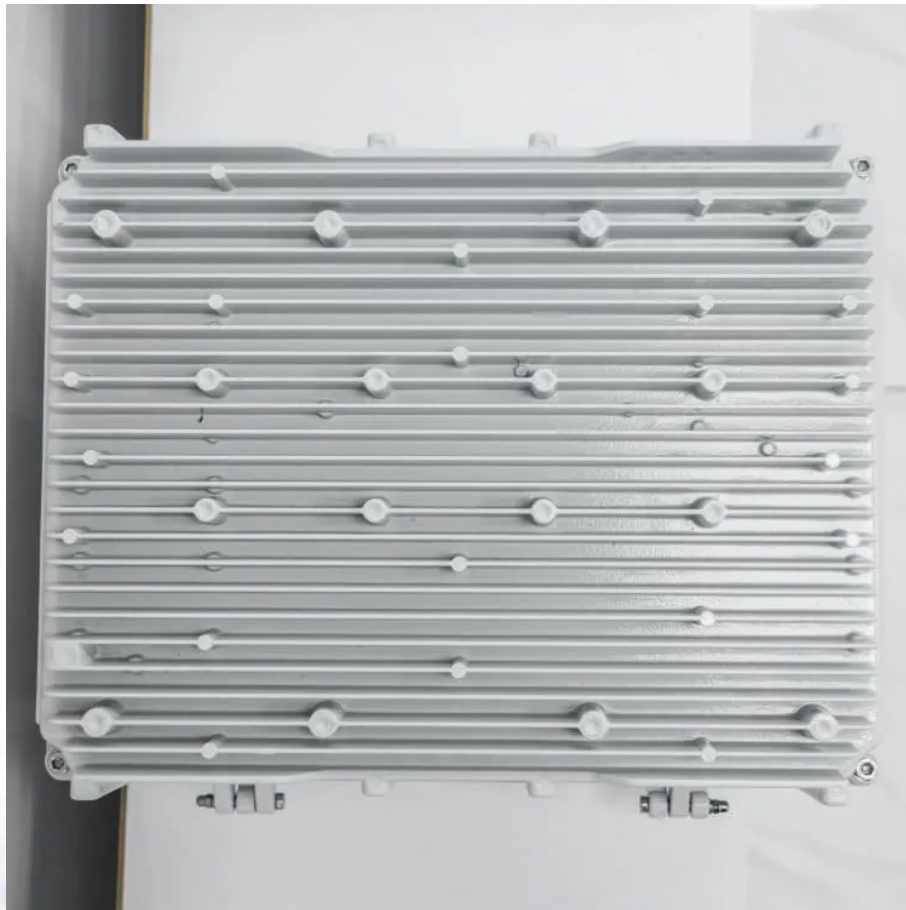


How to connect the battery cabinet wire if it is not long enough





Overview

How do you protect a battery cabinet?

High-quality cables, connectors, and terminals establish safe electrical connections between battery cabinets and other system components. And add appropriate fuses and circuit protection devices to the circuit to prevent overcurrent, overvoltage, and short circuits.

How do I connect a battery cabinet to an ups?

Connect the DC+ and DC- cables to the DC+ and DC- terminals. Connect the power cables in the UPS. If more battery cabinets are part of the solution, connect all battery cabinets to the UPS according to the diagram below.

How do I maintain a wired battery?

Here are some tips on how to maintain wired batteries: Keep the wire connections secure: Ensure that the wire connections between the battery and the device are tight and secure. Loose connections can cause intermittent power supply and reduce battery efficiency.

How to connect a battery with a wire?

Make sure to expose enough bare wire to create a secure connection. It is recommended to use wire strippers for a clean and precise cut. Next, twist one end of the wire around the positive terminal of the battery and ensure it is tightly secured. Battery with a Wire: How to Connect and Use It?



How to connect the battery cabinet wire if it is not long enough

Battery Cabling and Wiring Best Practices

A fuse is there to protect the wire, have it as close as possible to the battery terminal to protect the circuit beyond the fuse. If wires rub through and short circuit inside the loom or other circuits, ...

Connect the Power Cables

If more battery cabinets are part of the solution, connect all battery cabinets to the UPS according to the diagram below. NOTE: If the combined short circuit current of the battery cabinets ...

How To Connect Wires To A Battery Terminal

Feb 12, 2025 · Learn how to safely connect wires to a battery terminal with this step-by-step guide. Prevent short circuits and ensure a secure connection.

Battery Cabling and Wiring Best Practices

A fuse is there to protect the wire, have it as close as possible to the battery terminal to protect the circuit beyond the fuse. If wires rub through and ...

Lithium Battery Wiring: Ensure Reliable Power

Sep 11, 2025 · Step-by-step lithium battery wiring for safe series, parallel, and series-parallel banks. Build 48V from 12V, size cables and fuses, cut heat, and commission.

BC58 Battery Cabinet Installation, Operation,

Connect main cables from the UPS or charger source to the battery cabinet output. The battery cabinet output connection point will vary depending on the cabinet configuration. The main ...

Battery with a wire: how to connect and use it?

Jan 14, 2024 · Learn about battery connections using a wire, how to connect a battery with a wire, and the benefits of using a wired battery system.

How to Attach Wires to a Battery? (Full Process)

How Can I Attach A Wire to A Battery?How Do You Attach Wires to Battery Clamps?How Do You Wire A Battery Without Soldering?Can You Tape Wires to A Battery?How to Attach Wires to A Car Battery?How to Attach Wire to Battery Without SolderingHow to Connect Wires to An Aa Battery?How to Connect Wires to A 12V Battery?Battery Wire ConnectorHow to Connect Wires to 9V Battery?One of the most common questions we get asked at Battery Junction is how to connect wires to a AA battery. While it may seem like a simple task, there's actually a bit of technique involved to ensure that your connection is secure and won't come loose over time. In this post, we'll show you step-by-step how to properly attach wires to a AA battery See more on powerclues
Published: Oct 5, 2022.rcimgcol .cico { background: #f5f5f5; } .b_drk.rcimgcol .cico, .b_dark.rcimgcol .cico { background: unset; }.b_imgSet .b_hList li.square_m,.b_imgSet .b_hList li.tall_m{width:75px}.b_imgSet .b_hList li.tall_mlb{width:113px}.b_imgSet .b_hList



```
li.tall_mln{width:96px}.b_imgSet .b_hList li.wide_m{width:128px}.b_imgSet.b_Card .b_hList
li{padding-left:1px;padding-right:9px}.b_imgSet.b_Card .b_hList li.tall_wfn{width:80px;padding-
right:6px}.b_imgSet.b_Card .b_hList li:last-child{padding-right:1px}.b_imgSet.b_Card
.b_imgSetData{padding:0 8px 8px;height:40px}.b_imgSet.b_Card .b_imgSetItem{box-shadow:0 0 0
1px rgba(0,0,0,.05),0 2px 3px 0 rgba(0,0,0,.1);border-radius:6px;overflow:hidden}.b_imgSet
.b_imgSetData p a{color:#444;outline-offset:0}.b_subModule .b_clearfix.b_mhdr .b_floatR
.b_moreLink,.b_subModule .b_clearfix.b_mhdr .b_floatR .b_moreLink:visited,.b_subModule>.b_moreL
ink,.b_subModule>.b_moreLink:visited{color:#767676}.b_imgSet .cico.b_placeholder{display:flex;j
ustify-content:center;background-color:#f5f5f5;background-clip:content-box}.b_imgSet
.cico.b_placeholder a{display:flex}.b_imgSet .cico.b_placeholder a
img{width:48px;height:48px;margin:auto}@media(max-width:1362.9px){#b_context .b_entityTP
.b_imgSet li:nth-child(5){display:none}.b_imgSet .b_hList li.wide_m:nth-
child(3){display:none}}@media(max-width:1274.9px){#b_context .b_entityTP .b_imgSet li:nth-
child(4){display:none}.b_imgSet .b_hList li.wide_m:nth-child(2){display:none}}.rcimgcol
.b_imgSet{content-visibility:auto;contain-intrinsic-size:1px 124px}.rcimgcol{height:108px;padding-
top:var(--smtc-gap-between-content-x-small);padding-bottom:var(--smtc-gap-between-content-x-
small)}.b_algo:has(.b_agh) .rcimgcol{padding-top:var(--smtc-gap-between-content-xx-
small)}.rcimgcol .b_imgSet{overflow:hidden}.rcimgcol .b_imgSet ul{overflow-x:auto;overflow-
y:hidden;white-space:nowrap;padding-left:var(--mai-smtc-padding-card-default)}.rcimgcol
.b_imgSet ul::-webkit-scrollbar{-webkit-appearance:none}.rcimgcol .b_imgSet .b_hList>li{padding-
right:var(--smtc-padding-ctrl-text-side)}.rcimgcol .b_imgSet .cico{border-radius:unset}.rcimgcol
.b_imgSet .b_hList>li:first-child .cico,.rcimgcol .b_imgSet .b_hList>li:first-child .cico a{border-radius:
unset;border-top-left-radius:var(--smtc-corner-card-rest);border-bottom-left-radius:var(--smtc-corner-
card-rest);overflow:hidden}.rcimgcol .b_imgSet .b_hList>li:last-child .cico,.rcimgcol .b_imgSet
.b_hList>li:last-child .cico a{border-radius:unset;border-top-right-radius:var(--smtc-corner-card-
rest);border-bottom-right-radius:var(--smtc-corner-card-rest);overflow:hidden}.rcimgcol .rcimgcol
.b_sideBleed{margin-left:unset;margin-right:unset}.rcimgcol .b_imgclgovr{cursor:pointer}.rcimgcol
.b_imgclgovr .cico img: hover{transform:scale(1.05);transition:transform .5s ease}#b_content
#b_results>.b_algo .b_caption:has(.rcimgcol){padding-right:var(--mai-smtc-padding-card-default);
margin-right:calc(-1*var(--mai-smtc-padding-card-default));margin-left:calc(-1*var(--mai-smtc-
padding-card-default));padding-left:var(--mai-smtc-padding-card-default)}.rcimgcol .b_imgSet
.b_hList .cico a{display:flex;outline-offset:-2px} sightsOverlay,#OverlayIFrame.b_mcOverlay sights
Overlay{position:fixed;top:5%;left:5%;bottom:5%;right:5%;width:90%;height:90%;border:0;border-r
adius:15px;margin:0;padding:0;overflow:hidden;z-index:9;display:none}#OverlayMask,#OverlayMa
sk.b_mcOverlay{z-index:8;background-
color:#000;opacity:.6;position:fixed;top:0;left:0;width:100%;height:100%}cobtel How to do UPS
Battery Wiring? - cobtel 4 days ago · F. Before connecting the battery cables from the battery
cabinet to the host, measure the battery voltage with a multimeter, which should be 103.36V, and
check if the positive and ...
```

How to Attach Wires to a Battery? (Full Process)

Oct 5, 2022 · Of course, you must first attach the wires to the battery. This may seem like a daunting task, but it is actually quite simple. So how to attach wires to a battery? Here is answer!

How to do UPS Battery Wiring?

4 days ago · F. Before connecting the battery cables from the battery cabinet to the host, measure the battery voltage with a multimeter, which should be 103.36V, and check if the positive and ...

Avoid Short Circuits! Safely Connect Your Battery Terminal



Mar 2, 2025 · Learn how to safely connect a battery terminal without causing sparks or damage. Follow this simple step-by-step guide to ensure a secure and risk-free connection.

Lithium Battery Wiring: Ensure Reliable Power

Sep 11, 2025 · Step-by-step lithium battery wiring for safe series, parallel, and series-parallel banks. Build 48V from 12V, size cables and fuses, cut ...

How to correctly install lithium battery energy ...

Mar 25, 2024 · We want to ensure that the voltage rating of the lithium battery energy storage cabinet matches the installation site's electrical ...

How to correctly install lithium battery energy storage cabinet?

Mar 25, 2024 · We want to ensure that the voltage rating of the lithium battery energy storage cabinet matches the installation site's electrical specifications. If it does not match, it may ...

Avoid Short Circuits! Safely Connect Your ...

Mar 2, 2025 · Learn how to safely connect a battery terminal without causing sparks or damage. Follow this simple step-by-step guide to ensure a ...

Contact Us

For technical specifications, project proposals, or partnership inquiries, please visit:

<https://lopianowa.pl>

Scan QR Code for More Information



<https://lo pianowa.pl>