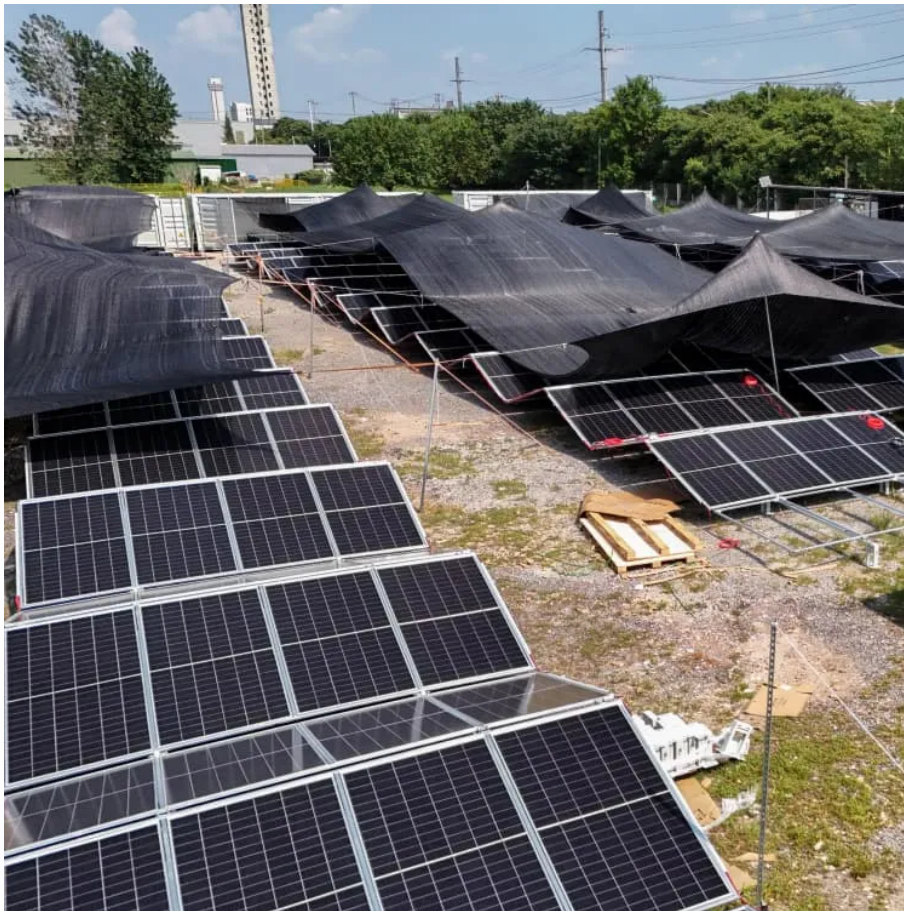


Seoul signal base station





Overview

Where is Seoul Station located?

Seoul Station is located in Seoul, South Korea.

How many 5G base stations are there in India?

The country's three operators have deployed 166,250 5G base stations which is approximately 19% of the country's 870,000 4G base stations. Deploying a new network technology is expensive for mobile operators.

How does 5G reach work in South Korea?

All locations that an individual user visits have the same weighting in the final 5G Reach score. In South Korea we see 5G Reach scores of 5.7 on a ten point scale. In other words, in over half of the locations where 5G users go, they are in a location where there is a 5G signal.



Seoul signal base station

AI-based Optimization for 5G Base Stations

Oct 31, 2024 · SK Telecom and Samsung have recently developed technology that automatically suggests optimal parameters for each base station according to the environment to boost ...

South Korea Base Station Signal Amplifier Market Size 2026

Nov 18, 2025 · The growth of the South Korea Base Station Signal Amplifier Market is primarily driven by the rapid expansion of 4G and 5G network deployments across the country.

Korea Base Station Antenna Market Trends & Forecast 2025 ...

May 2, 2025 · Korea Base Station Antenna Market Outlook 2025 to 2035 The South Korea base-station-antenna market is expanding rapidly as the nation upgrades its digital infrastructure to ...

Korea cuts LTE reallocation fee 15% and rewards 5G indoor base station

2 days ago · Korea cuts LTE reallocation fee 15% and rewards 5G indoor base station builds Reallocation fee set at 3.1 trillion won with discounts for carriers tha

South Korea LTE Base Station System Market ...

Market Overview: South Korea LTE base station system market size is projected to exhibit a growth rate (CAGR) of 21.19% during 2025-2033. ...

SK Telecom and Samsung Develop AI-Based 5G Base Station ...

Nov 27, 2024 · On October 28, Korean telecom giant SK Telecom and Samsung Electronics announced the joint development of AI-based 5G base station quality optimization technology. ...

Understanding where and when users can ...

Feb 25, 2021 · There are several coverage metrics which operators, regulators and media often quote: Population coverage. In South Korea, ...

South Korea LTE Base Station System Market Report by ...

Market Overview: South Korea LTE base station system market size is projected to exhibit a growth rate (CAGR) of 21.19% during 2025-2033. The increasing demand for high-speed ...

Understanding where and when users can experience 5G in South Korea

Feb 25, 2021 · There are several coverage metrics which operators, regulators and media often quote: Population coverage. In South Korea, operators exceeded 90% 5G population ...

SK Telecom upgrades 5G base stations with Samsung

Oct 29, 2024 · South Korea's SK Telecom Co. said on Monday that it partnered with Samsung Electronics Co. to apply artificial intelligence (AI)-based quality optimization technology for fifth ...



SK Telecom, Samsung use AI to optimize 5G base stations

Oct 28, 2024 · SK Telecom is also working to evolve the AI's capabilities to autonomously adjust base station signals or redefine transmission ranges in response to weak signals or data ...

AI-based Optimization for 5G Base Stations

Oct 31, 2024 · SK Telecom and Samsung have recently developed technology that automatically suggests optimal parameters for each base ...

SKT-Samsung Electronics to Optimize 5G Base Station ...

Oct 28, 2024 · SK Telecom (SKT) has partnered with Samsung Electronics to use AI to improve the performance of its 5G base stations in order to upgrade its wireless network. Specifically, ...

Contact Us

For technical specifications, project proposals, or partnership inquiries, please visit:

<https://lopianowa.pl>

Scan QR Code for More Information



<https://lopianowa.pl>